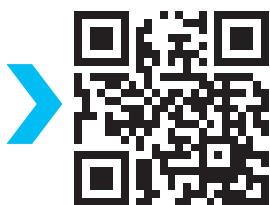


## S200

ControloC allows you to have "someone" looking after your assets.

The standalone S200 is an intelligent device for monitoring environmental variations, such as temperature, humidity, smoke, presence of water, etc. When a sensor goes out of range of a configurable threshold, the S200 will notify you via the web, e-mail or SNMP.

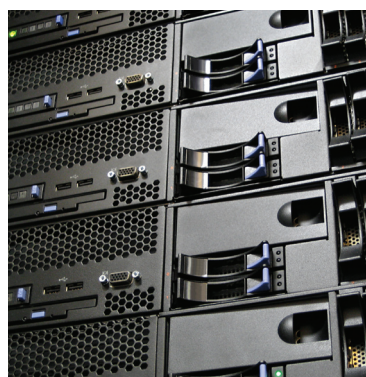


For detailed info visit our [www.controloc.net](http://www.controloc.net) web site



In the future, everything will be connected to everything else

[Internet of Things Consortium](#)





# S200

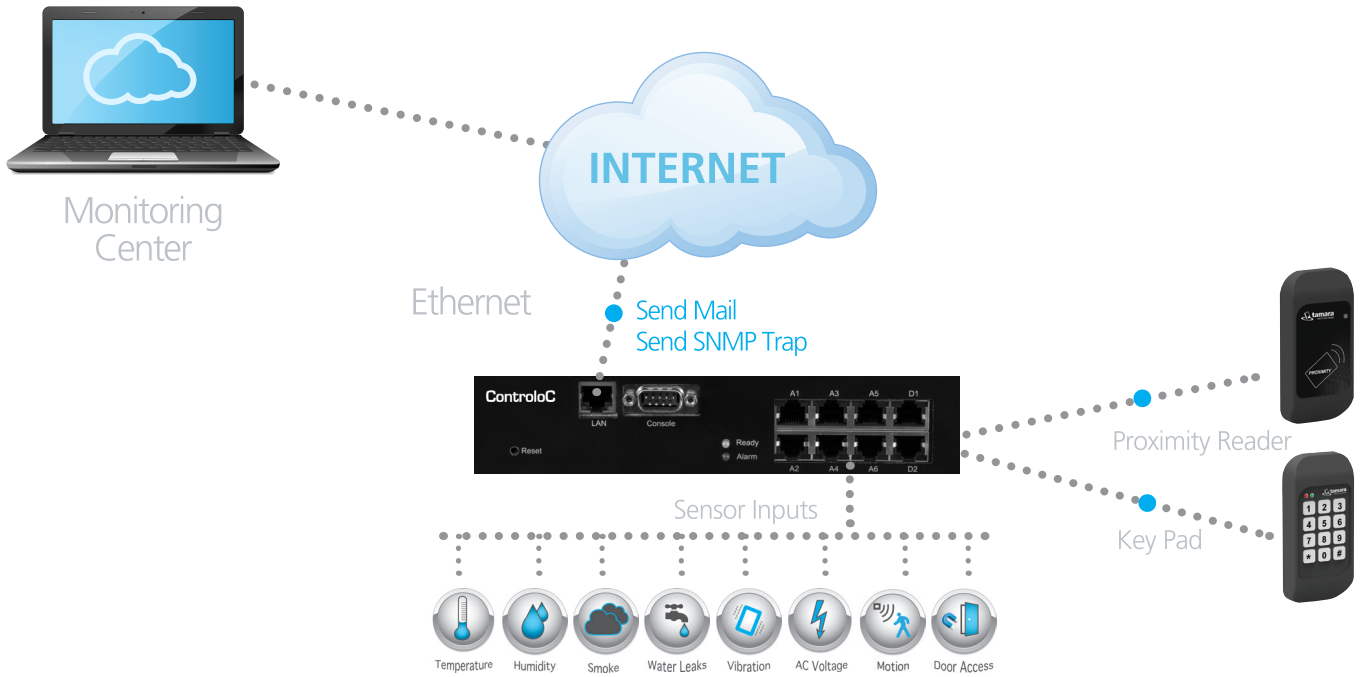
The standalone S200 is an intelligent device for monitoring environmental variations, such as temperature, humidity, smoke, presence of water, etc. When a sensor goes out of range of a configurable threshold, the S200 will notify you via the web, e-mail or SNMP.

## Basic features

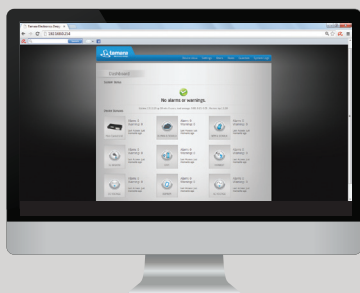
- Monitors and manages environmental and security conditions over internet
- Built-in web interface for monitoring and configuring the unit
- Creates alert with customized input parameters
- Alerts are sent using e-mail and/or SNMP traps when any monitored environmental condition exceeds a user-specified range
- Controls who and when open doors and allows you to get detailed log for all access attempts
- Possible to open the door over the Web
- Supplied with a MIB for integrating with various third party SNMP based Network Management systems such as Nagios and others

# Web Interface

- Full monitoring and configuration via the web.
- Configuring sensor thresholds, set automatic operation and alarm rules.
- Automatically generated system logs
- Monitoring of current sensor values and alarm status
- Configure network settings (IP address, subnet mask, default gateway, DNS, etc.) and user administrative settings.



Features	Details
IP Monitoring	WEB, SNMP
SNMP Compliance	SNMP 1v, SNMP 2v
Alerting	e-mail, SNMP trap
LAN	10/100Mbit Ethernet
Operating System	Linux
Relay Outputs	4x on/off -10A
Dry Contact Inputs	8x dry contact input
Dry Contact Outputs	2x dry contact output
Sensor Inputs	* 2x6P4C Digital sensor inputs (Smoke & Temperature ; Humidity & Temperature Sensor) * 4x6P4C Analog sensor inputs
IOP Port	port for Access Control
Power Supply	220Vac
Dimensions	1U



Suitable for today's online world

S200 allows real-time monitoring & management at anywhere in anytime

# Sensors and Accessories

## Digital Sensors



### Smoke and Temperature

Sensor monitors temperature and existence of the smoke. Sensor contains an embedded temperature sensor.

CC1000



### Humidity and Temperature

Sensor measures humidity and temperature indoors. Sensor contains an embedded temperature sensor.

CC1001

## Analog Sensors



### Water Leak

When water is detected by the metal probes, the sensor indicates the presence of moisture.

CC2000



### Vibration

Sensor can be installed on walls, windows, etc., to monitor the vibration of the surface.

CC2001



### AC Voltage

Sensor monitors standard 220-230V mains power supply; for example in an outlet socket or in a rack-mountable socket strip.

CC2002



### Motion (PIR)

Sensor can monitor movement over the range of the infrared beam.

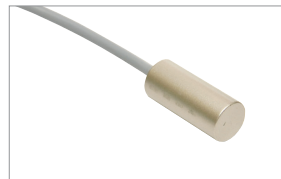
CC2003



### Contact

Install this sensor on cabinet doors, windows, etc. to monitor whether these are open or closed. Sensor uses a magnet and metal plate.

CC2004



### Outdoor Temperature

Sensor can measure the temperature outside the premises and can also be used indoors.

CC2005

## Access Control Accessories



CC3000

Keypad



CC3001

Proximity Reader



CC3002

Mi-fare Card